



THE LONDON BOROUGH
www.bromley.gov.uk

BROMLEY CIVIC CENTRE, STOCKWELL CLOSE, BROMLEY BRI 3UH

TELEPHONE: 020 8464 3333

CONTACT: Lisa Thornley
Lisa.Thornley@bromley.gov.uk

DIRECT LINE: 020 8461 7566

FAX: 020 8290 0608

DATE: 07 June 2013

RENEWAL AND RECREATION POLICY DEVELOPMENT AND SCRUTINY COMMITTEE

Meeting to be held on Tuesday 11 June 2013

Attached is an OLF Projects Update which forms Appendix 3 of the item below:

- 11 TOWN CENTRES DEVELOPMENT PROGRAMME UPDATE (Pages 3 - 12)**

*Copies of the documents referred to above can be obtained from
www.bromley.gov.uk/meetings*

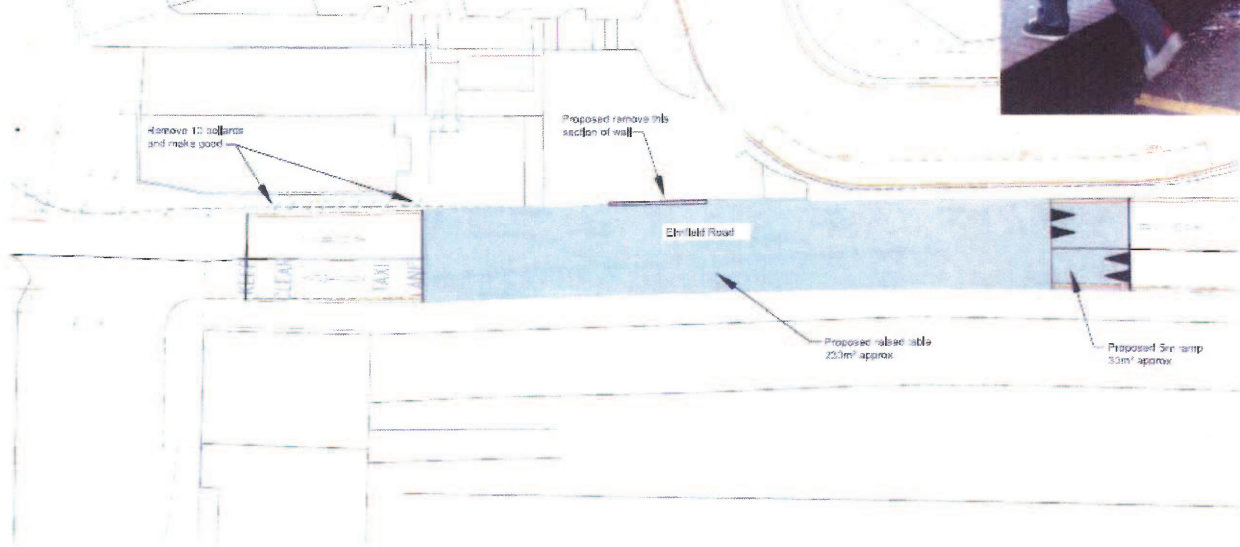
This page is left intentionally blank

BROMLEY: OLF Projects Update: JUNE 5th

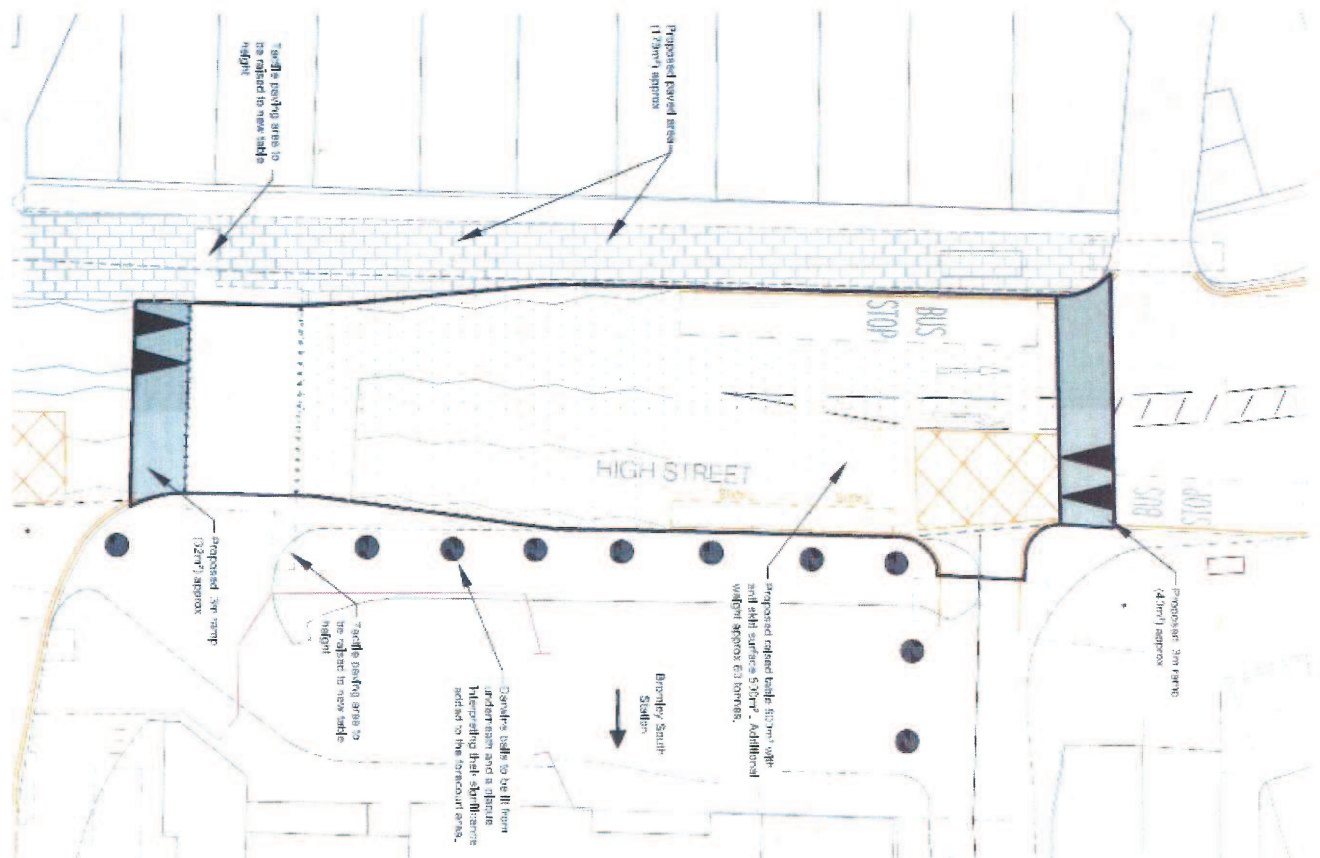
1B BROMLEY SOUTH



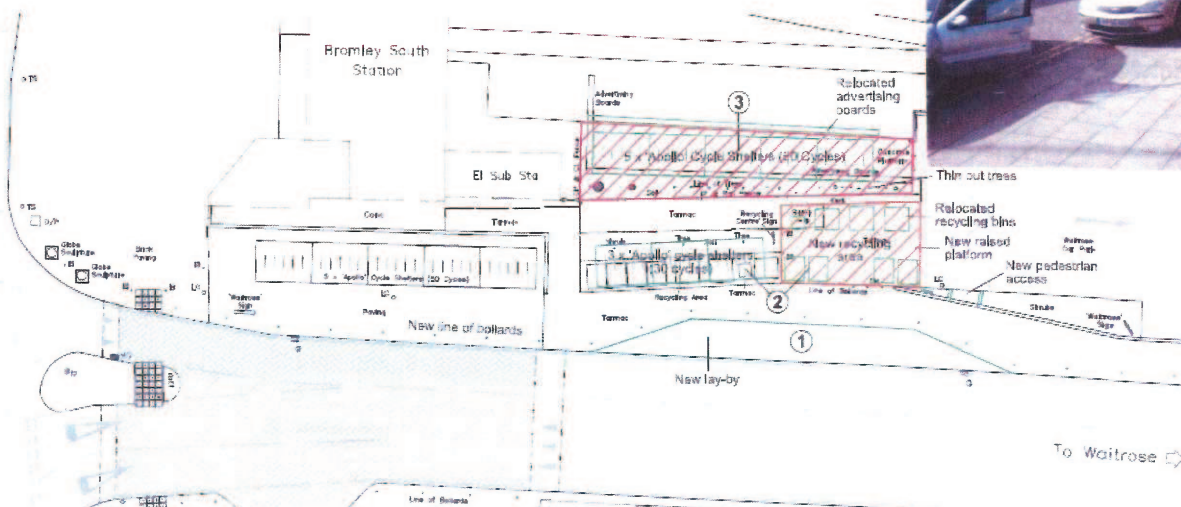
Elmfield Road raised table extension



Bromley High Street new stone setts and anti-skid treatment.

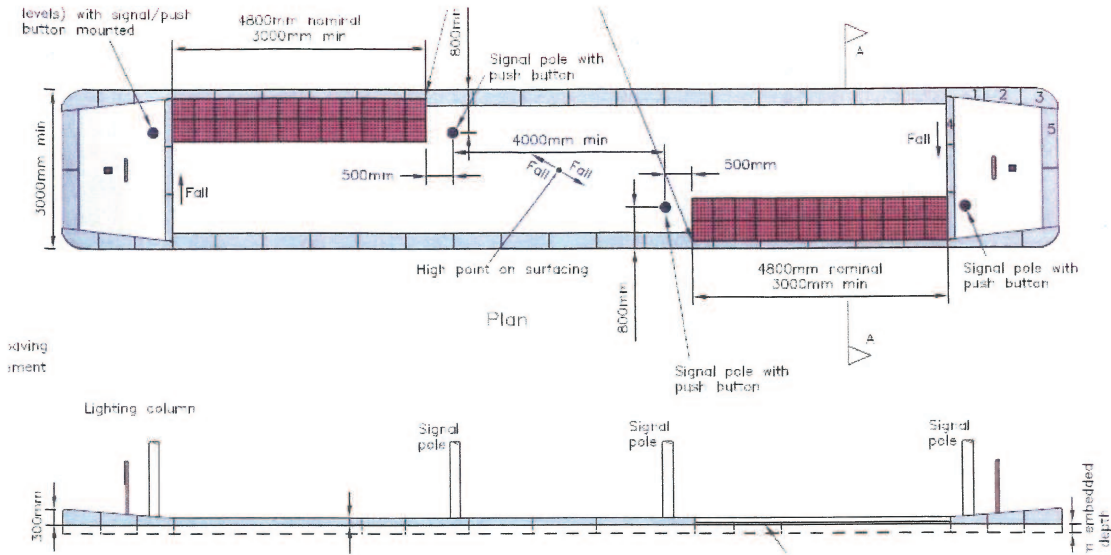


Waitrose access road layby -



Westmorland Place sheep pen and railing removal





Status:

- Safety audits complete and being completed
- Project Centre detailing schemes
- Term Contractor O'Rourke identifying delivery slot
- Implementation date TBC

Risk: Works needs to coincide with South Central scheme and Bromley North Village works

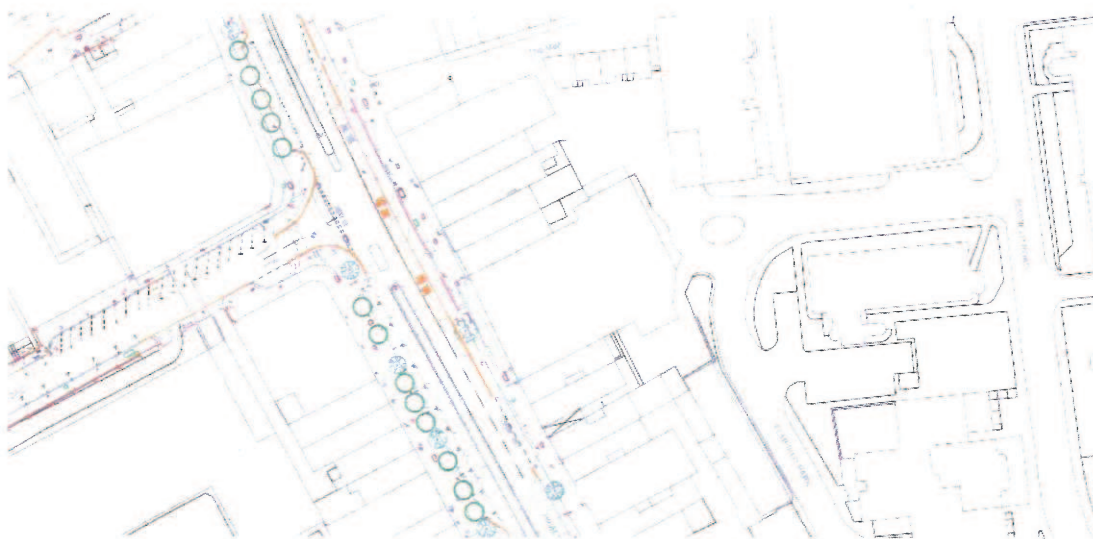
Countdown Crossing Glades, Elmfield Road

Status: Implementation date September



Bromley Boulevard of Trees

No. 16 root-ball trees 5m height 20-25 girth



Status:

Trees being held at plant nursery
Opportunity to create graphic for new tree location???

Implementation Date: November

Risk: Tree pits impossible to plant trees in when holes dug due to utilities.

St Marks Church Public Space

Status:

Approvals in place costs
Contractor ready

Implementation Date: **September 2013-Spring 2014**



1C Shopfronts Status



Street	Units	£
Block 1 High Street north, 208-218 August	4 units	
Block 2 High Street north, 189-191 August	2 units	
Block 3 East Street south, 2-10 October	7 units	
Block 4 East Street north/Market Parade, November	(1 unit)	
Independents unit contributions, July -November	(7 units)	



Block 2



Block 3 East Street (below as well)



Block 4



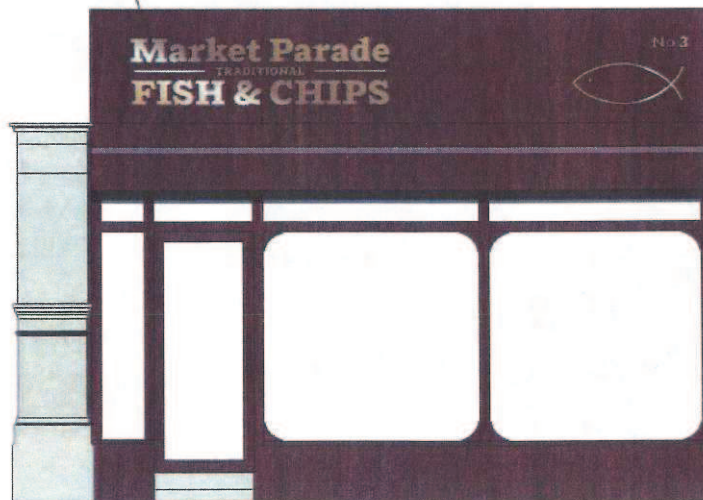
BROMLEY WELCOME STRATEGY
 SHOPFRONT CLUSTER 02
 BIRCHMERE
 45 EAST STREET
 REVISION 10.3
 04/03/2015
 SCALE 1:250 (A3)
 OBJECTIVE
 020 7701 8480
 INFO@BIRCHMERE.CO.UK
 FOR COSTINGS ONLY
 ALL DIMENSIONS AND PRICES
 GIVEN SUBJECT TO CHANGE
 If Market Parade
 Fish & Chips
 Contact:



AS IS



PROPOSED



Status:
 Contractors primed to start on Block 1 High Street - July
 Contractors to start work on East Street Block 3 - August
 All blocks to be complete by November

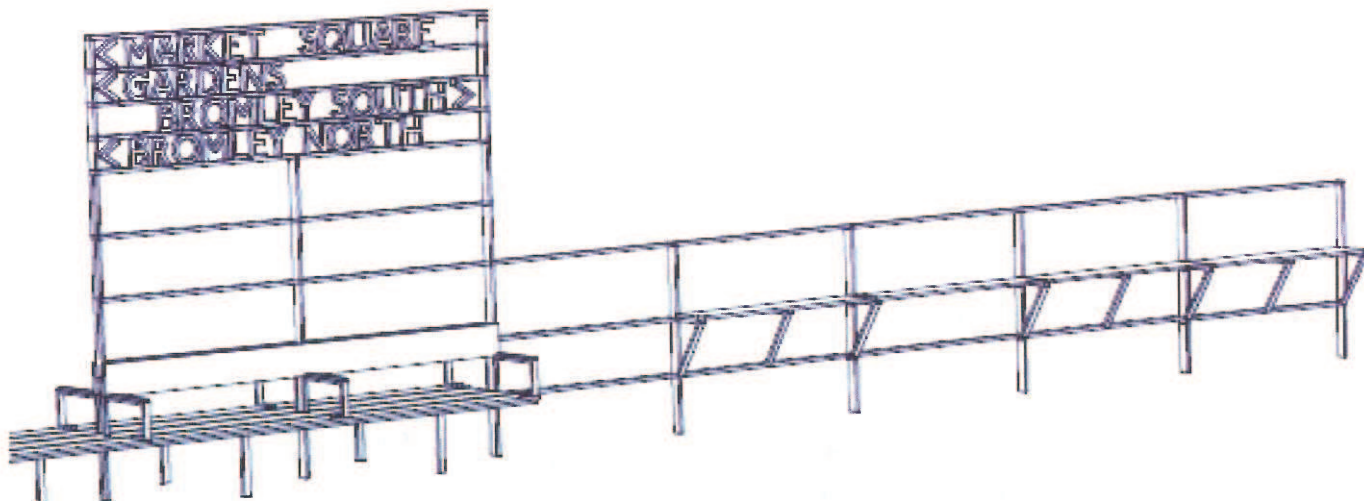
1D Welcome Strategy

Bus Shelter Seat

New bus stops to be added:

Status:

Implementation: **August**



Lighting – Status:

Lorraine Calcott to undertake design study for lighting scheme for June 4th (£5,000)
 Cartledge our term contractors will install Lorraine's scheme with our £50,000 budget.



Implementation: **June/July-October**

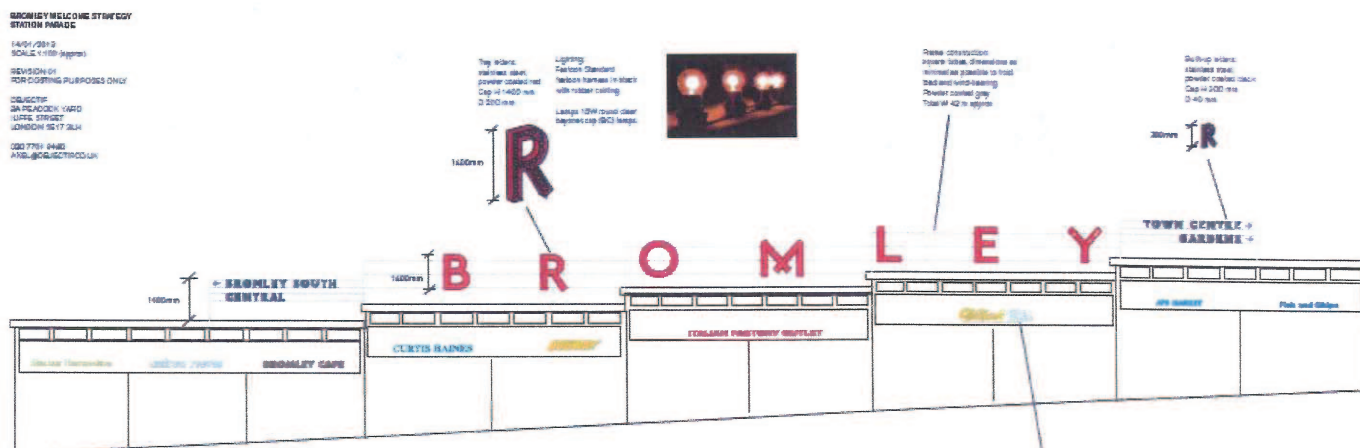


2-22 high Street - Status

Finalising package for the new contractor to programme into their works schedule.

Conditions survey report completed being undertaken Thursday 30th May

Implementation: **June-October.**



Legible London -

Map to be finalised

Awaiting final post locations from the 1A team

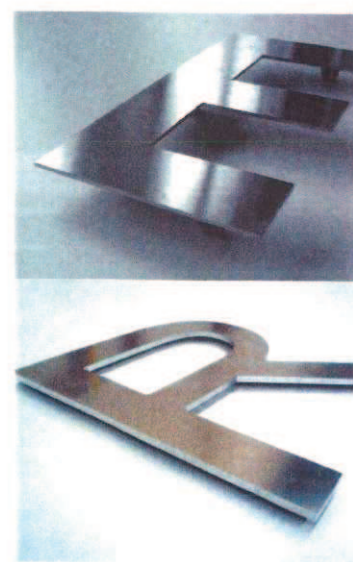
Implementation starts: **July**



Platform Welcome BROMLEY

Large stainless steel letters, 2 meters high spelling BROMLEY

Awaiting delivery slot confirmation with Network Rail and South Eastern to confirm implementation



We are Bromley Campaign
Painting on side of wall and posters



June-September Events: Sports and Sci-Fi Special



815sqm of Artificial Grass



20 Bean Bags for Children



10 new painted park benches



Space to be activated by local groups from sports, theatre, sci-fi and the library.



Bromley's Park Life

From July to early September this Summer the area in front of the Churchill Theatre and the adjacent High Street will be home to engaging and inspiring art installation called 'Park Life' This event follows on from the success last year of the Air City and East Street gallery events. The installation will take the form of an artificial lush green lawn representing a temporary extension of Church House Gardens into the High Street. The space will be scattered with ten colourful wooden benches to add colour and visual interest and a number of these will be offered to our development partners as a blank canvas to promote their developments. The lawn itself will form the basis for a range of activities from relaxing on the new benches or actively engaging in a programme of activities supplied by local groups and businesses., The purpose of this installation is to showcase the positive changes that are taking place in the town and reawaken in all town users an appreciation and use of such a wonderful natural resource on our doorstep.

Bromley is changing for the better; services are being upgraded and improved, such as the recently newly refurbished Pavilion's Leisure Centre and Bromley South Station. The town heritage is being preserved and enhanced with the transformational public realm improvements to historic Market Square and Bromley North Village. New developments by the Cathedral Group at Westmoreland Road and the Old Town Hall will provide a range of new high quality leisure and hotel services to residents and businesses.

A part of this ambitious development programme the Council is also moving forward at pace to deliver a major qualitative improvement in the retail shopping offer with the redevelopment of the site known as Churchill Place, west of the High Street and adjacent to the Gardens. The Council is currently assessing a development proposal from a prospective development partner which places the Gardens at the heart of the plans. The aspiration is create a new public piazza in front of the theatre which opens up panoramic views of the park from the High Street. This installation and the extension of the park into the High Street will allow users a glimpse of the full potential that could be realised from this development. The proposed programme of events is designed to engage with town users and encourage them to explore and appreciate the Gardens and make future visits to it an integral part of their visitor experience.

The programme of events will focus on activating the lawn by local groups and businesses from sport, theatre, sci-fi and the Central Library. The Council will employ a programme co-ordinator to develop and oversee the events. It is proposed to reuse the mirrored container to showcase the Council's development programme, using models and plans and drawings of proposed developments.

6. Proposed Scheme



Coventry Cathedral



St Martin's, Bull Ring, Birmingham



St Martin's-in-the-Field, London

6.1 Design overview

The design of the proposal has been considered in the context of the brief, the client group aspirations and cost; it also pays heed to wider changes in Bromley Town Centre.

The adjacent development at Bromley South Central will provide two 'urban' squares – hard spaces which are multifunctional and able to accommodate with the large number of people who will be living in and visiting the development. St Mark's predominantly 'green' churchyard provides a counterpoint to these 'hard' spaces and with selective interventions could be opened up to provide a useable, beautiful public space for Bromley Town Centre.

In responding to the brief the scheme proposed to open up the eastern end of the Churchyard to create two new spaces; the 'Northern and Eastern Gardens'.

In light of the above we see the churchyard as 4 distinct areas:

1. Entrance Space - A functional, simple arrival space with car parking
2. Northern Gardens - A visually permeable frontage to the churchyard
3. Eastern Gardens - The 'public gift' an green oasis with amphitheatre seats centred on the Oak tree
4. Garden of remembrance - A tranquil space for reflection protected from the bustle of Westmoreland Road

The 4 design of the character areas are discussed in detail during the following pages, however the broad approach is one of

1. Widening paths, introducing ramped transitions (Access for All)
2. Removing extraneous soft landscape and clutter (tired shrubs)
3. Making good valuable existing

